



Evelyn Street, London, SE8 5RS

A well-presented top floor two bedroom maisonette located within a short walk of Surrey Quays station, the Canada Water Masterplan, and vibrant Deptford High Street.

The property offers a modern, well-proportioned kitchen and a bright, spacious reception room with space to dine. There are two generously sized double bedrooms, a neatly maintained family bathroom, and excellent built-in storage throughout, including three large hallway cupboards.

The surrounding area provides an excellent selection of cafés, bars, restaurants and supermarkets, alongside strong transport links and the open green spaces of Deptford and Southwark Parks. The River Thames and the area's picturesque docks are also just moments away.

Years on Lease - 99
Annual Service Charge - £1537.29
Annual Ground Rent - £10
Council Tax Band - B

Council tax, property size and, where applicable, lease information, service charges and ground rent are given as a guide only and should always be checked and confirmed by your Solicitor prior to exchange of contracts.

- Top Floor Two Bedroom Maisonette
- Excellent Transport Links
- Modern Kitchen
- Generous Storage Throughout
- Naturally Bright
- Residents parking
- Moments from the River Thames and Scenic Docks
- Short Stroll from Deptford High Street
- Moments from Canada Water Masterplan
- Low Service Charge

Alex & Matteo
ESTATE AGENTS

£375,000

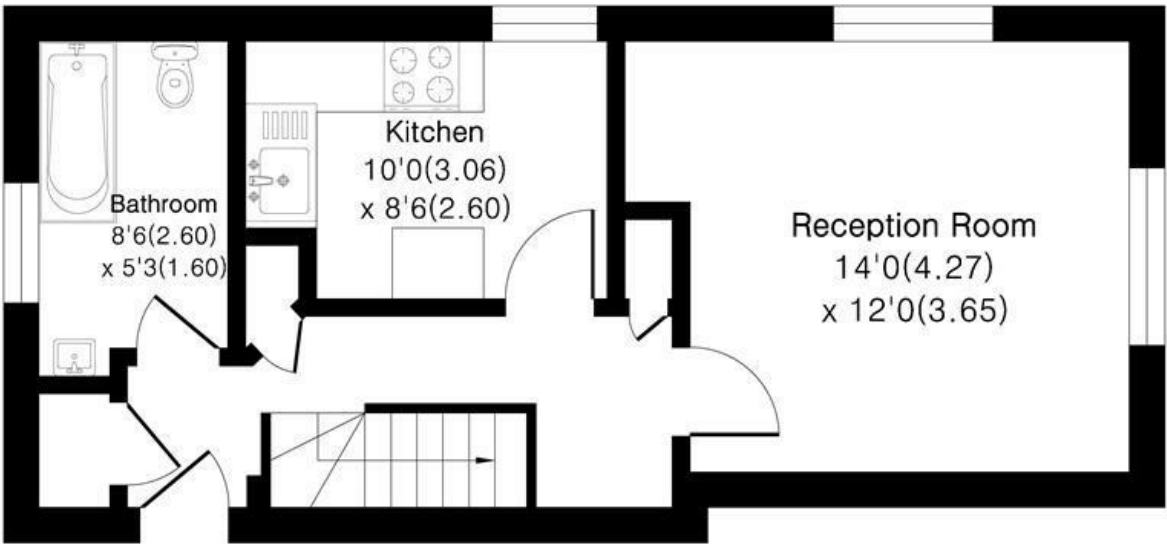
Pomona House, SE8

Approximate Area = 657 sq ft / 61.0 sq m

For identification only - Not To Scale



Fourth Floor



Third Floor



Floor plan Produced in accordance with RICS Property Measurement 2nd Edition.
Incorporating International Property Measurement Standards (IPMS2 Residential).
Produced for Alex & Matteo Estate Agents.

